

SuperSet

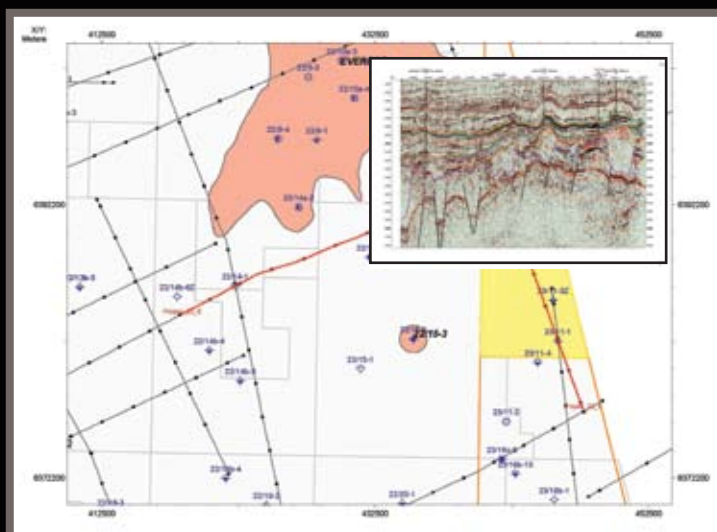
CENTRAL NORTH SEA Regional 2D Seismic Interpretation Project

QUICK, EASY AND COST EFFECTIVE ACCESS TO A CNS REGIONAL 2D INTERPRETATION

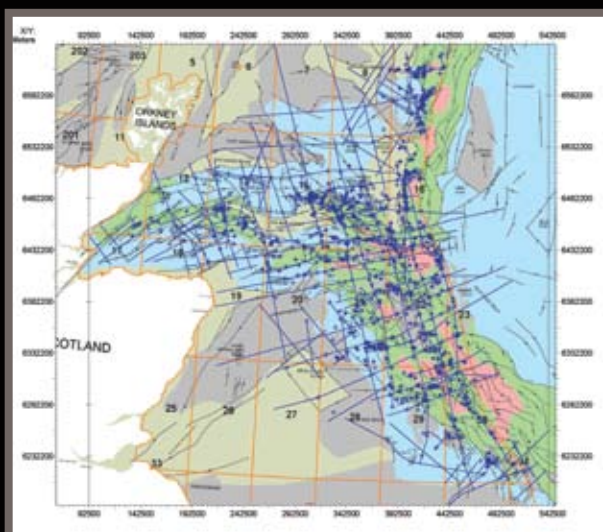
WesternGeco and EGL are pleased to announce the availability of the SuperSet regional 2D seismic interpretation project for the CNS. The data has been specially selected from WesternGeco's comprehensive speculative seismic database and is fully integrated into a basin-wide SMT Kingdom digital seismic interpretation. The SuperSet project will provide an invaluable tool for companies evaluating the CNS acreage available in the upcoming 25th UKCS Round.

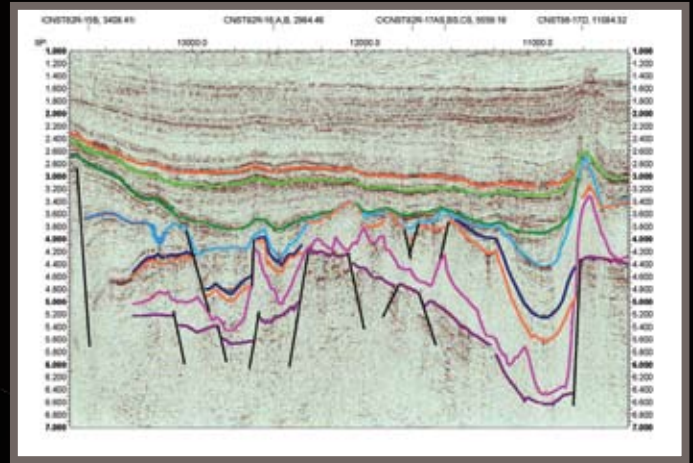
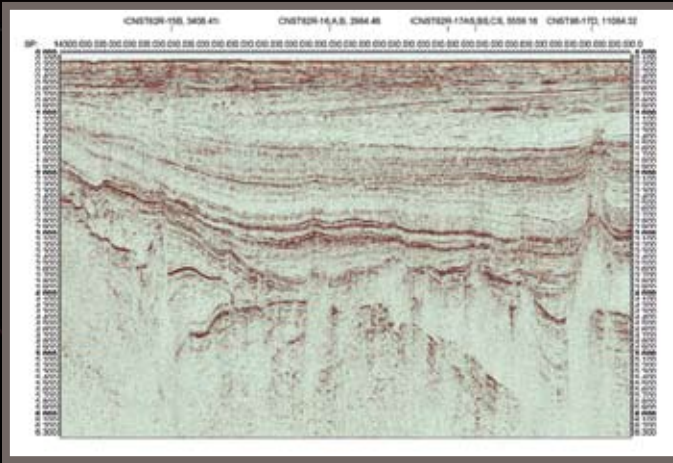


Open UKCS acreage and SuperSet coverage



Framework interpretation with detailed notes on geology and plays

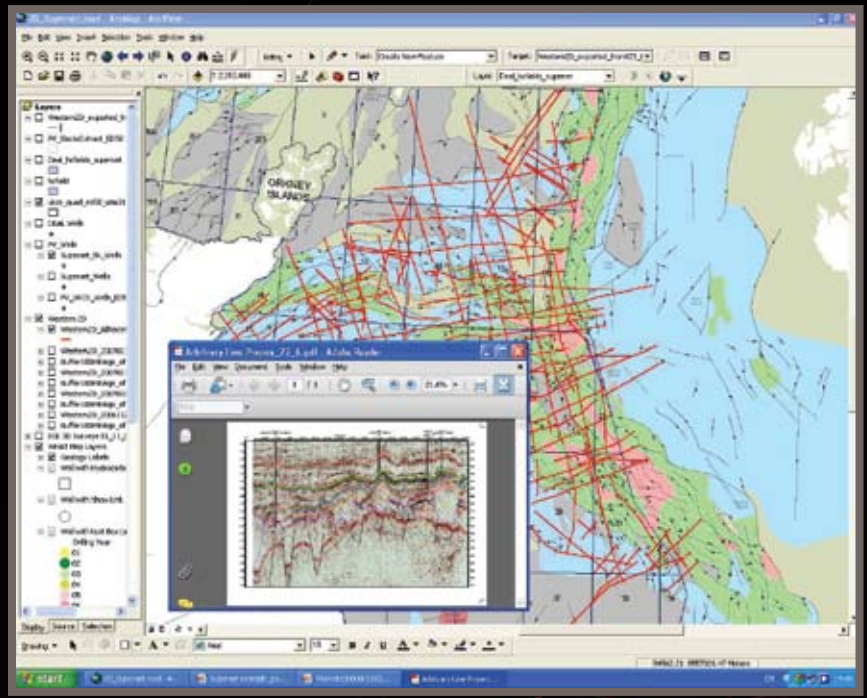




Framework interpretation in Kingdom as well as PDF within a GIS project



GIS access to project



Industry Value

- Fast access to pre-selected data within a Kingdom project including key well tops and times, cultural data, regional geology and framework interpretation
- Enhanced deliverables to include GIS product with links to PDF version interpreted lines. A3 summary plots for each open block; well data; horizon files and SEG Y
- Immediate value to exploration teams and new ventures groups ahead of the 25th Round
- Includes licence to underlying non-exclusive 2D seismic data
- Further phases planned – Other N Sea and UKCS basins, further interpretation modules, delivery options and further seismic data integration from WesternGeco's library



Yvonne Drummond

Exploration Geosciences
 Shear Farm Barn
 North Road
 Goudhurst Kent UK
 TN17 1JR
 Tel: +44 (0) 1580 212080
 Fax: +44 (0) 1580 212205
 E: yvonne.drummond@expgeo.co.uk
 W: www.expgeo.co.uk

Peter Elliott

EPSweb
 T: + 44 (0) 7971 073 198
 F: + 44 (0) 116 271 1097
 E: peter.elliott@epsweb.com
 W: www.epsweb.com
 Skype: epsweb

