

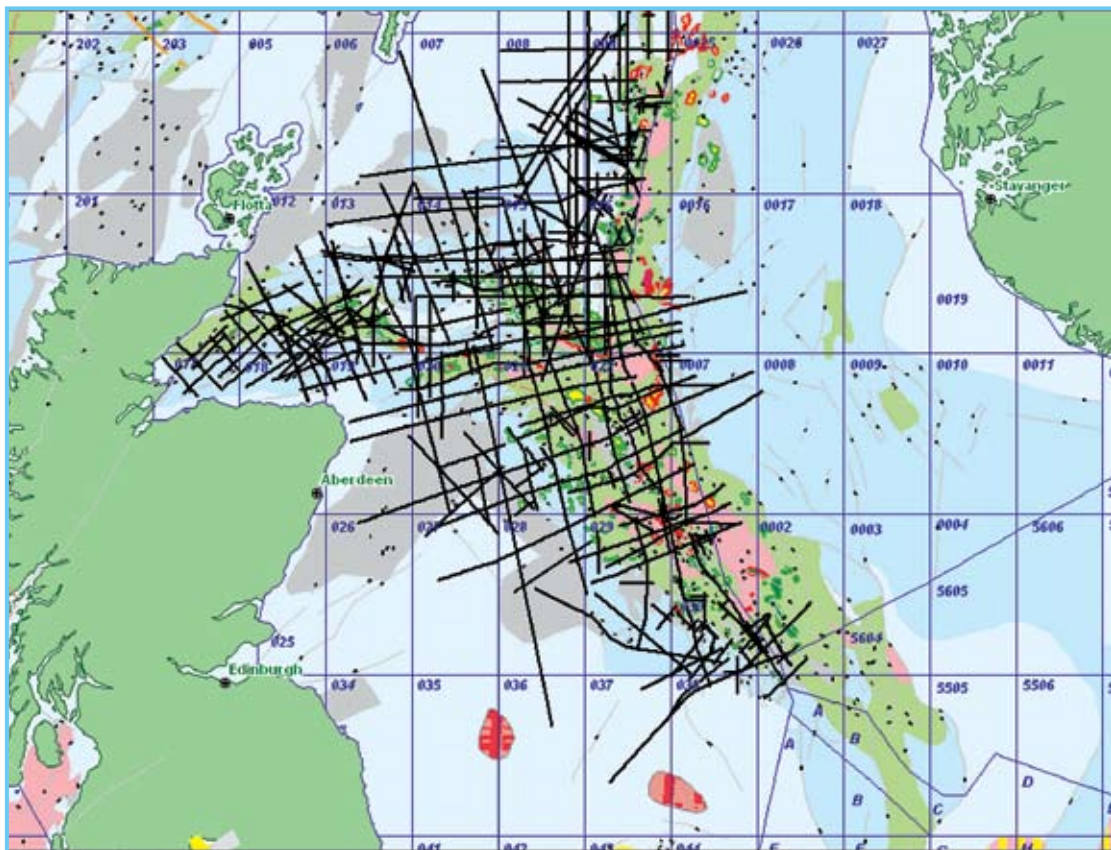
SUPERSET - CENTRAL NORTH SEA

Regional 2D Seismic Database

QUICK, EASY AND COST EFFECTIVE ACCESS TO A CNS REGIONAL 2D DATABASE

WesternGeco and EGL are pleased to announce plans to develop a regional 2D seismic dataset over the entire Central North Sea in the UKCS. The data is specially selected from WesternGeco's comprehensive speculative seismic and will be fully integrated into a basin-wide SMT Kingdom digital seismic database.

Industry support and pre-commitment is being sought for this SuperSet project. Companies pre-committing to the project will receive project updates, interim products as well as contributing to the choice of data included.



Peter Elliott

T: + 44 (0)7971 073 198

F: + 44 (0) 116 271 1097

E: peter.elliott@epsweb.com

W: www.epsweb.com

Skype: epsweb



Yvonne Drummond

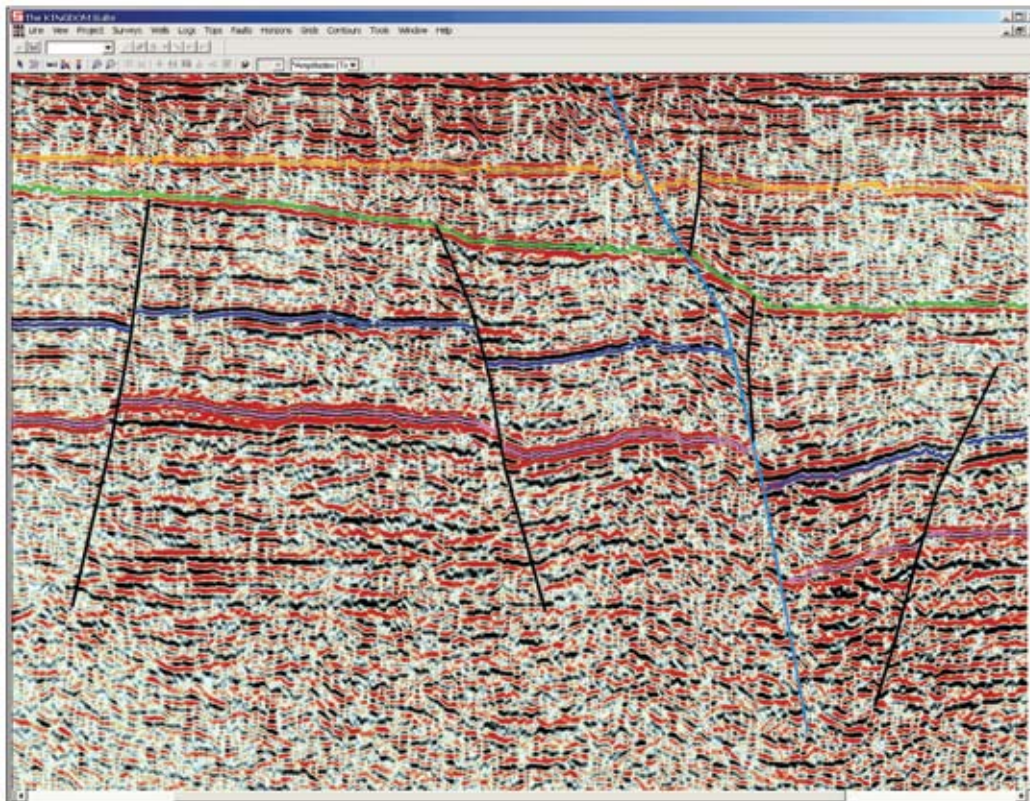
T: + 44 (0) 1580 212080

F: + 44 (0) 1580 212205

E: info@expgeo.co.uk

W: www.expgeo.co.uk





Industry Value

- Low cost basin-wide 2D seismic database
- Fast access to data within a Kingdom project (other applications to be confirmed) INCLUDING relevant well tops and times, cultural data, regional geology and framework interpretation
- Immediate value to exploration managers, regional new ventures programmes and basin modelling
- Collaborative project with input from EGL, WesternGeco and industry users
- Further phases planned – other N Sea and UKCS basins, further interpretation modules, other delivery options, well data integration and further seismic dataset integration

Costs, Timings and Deliverables

The initial 15,000km Superset database will be available for licensing at **£50,000** per licence. Licences are for corporate use and data can be served to more than one office. Bona Fide exploration groups of more than one oil company may benefit from a group discount.

Companies licensing SuperSet will receive access to a Kingdom 2D project for the CNS UKCS. Data can be viewed and/or downloaded. Final migrated SEG Y data for the SuperSet database will be made available on request at nominal data copying costs.

Peter Elliott



T: + 44 (0)7971 073 198
 F: + 44 (0) 116 271 1097
 E: peter.elliott@epsweb.com
 W: www.epsweb.com
 Skype: epsweb

Yvonne Drummond



T: + 44 (0) 1580 212080
 F: + 44 (0) 1580 212205
 E: info@expgeo.co.uk
 W: www.expgeo.co.uk